

**3**

Object Script. Cache  
 : : , . - ,  
 : , ,  
 . : .

**Cache Object Script**

Caché Object Script - - ,  
 Caché.  
 (Delphi, C++ .)

« ^ », Caché Object  
 Script.

(global) ,  
 « ^ », Caché Object Script

: -  
 ,  
 .

Cache Object Script ,  
 , ,

\$ZUTIL,  
 .

## , Caché Object Script:

- DO;
- SET;
- WRITE;
- READ;
- QUIT;
- NEW;
- IF;
- ELSE;
- FOR.

:

- (+,-,=,/,\,\*\*,#);
- (>,<);
- (␣);
- « » (');
- (?).

(:)

. , ;

, ,

:

- DO;
- SET;
- WRITE;
- READ;
- QUIT;
- NEW;

- IF;
- ELSE;
- FOR.

**DO**

DO

Caché

, {}.

DO

**SET**

SET

**SET** variable=<expression>

**SET** (x<sub>1</sub>, x<sub>2</sub>, ..., x<sub>N</sub>) = <expression>

**WRITE**

WRITE

WRITE

WRITE

**WRITE** x

**READ**

READ

READ

**READ**

:

1 -

!	
#	
?n	n , n -

**QUIT**

QUIT , DO FOR

QUIT DO FOR,

QUIT

: **Cache Object Script**

**NEW**

NEW

**IF**

IF

0:

**IF**  $y=0$  **WRITE** " 0".

**WRITE** ,  $y=0$ .

**ELSE**

**ELSE** , ,

**IF** .

, **IF** **ELSE**

(Slope) :

**IF**  $x=0$  **SET** Slope=" "

**ELSE SET** Slope= $y/x$

, **ELSE SET** !

Caché ,

2-

+	, 0.
-	, -1. 0.
=	False 2 True, ,
*	.

	0, , 0
/	.
\	.
**	
#	

Caché , :

3 – .

>	, , , .
<	, , , .

**Cache Terminal**

Caché Terminal – ASCII ,

Caché.

, Caché,

Caché Object Script, Caché

Object Script, :

**USER>**

USER – Caché (Name Space), .

, Caché Object Script:

ZNSPACE " " ZN " "

,

**USER>ZN "SAMPLES"**

USER, :

**SAMPLES>**

SAMPLES.

Caché

Object Script,

80

Caché Studio.

**Caché Terminal**

Caché Terminal

VT 320

4 –

«Terminal»

<Insert>	insert/override
<Delete>	
<Home>	
<End>	
<Up Arrow>	
<Down Arrow>	
<Left Arrow>	
<Right Arrow>	
<Ctrl>,I	
<Ctrl>,L	
<Ctrl>,U	
<Ctrl>,W	
<Ctrl>,G	
<Ctrl>,X	
<Ctrl>,S	
<Ctrl>,Q	

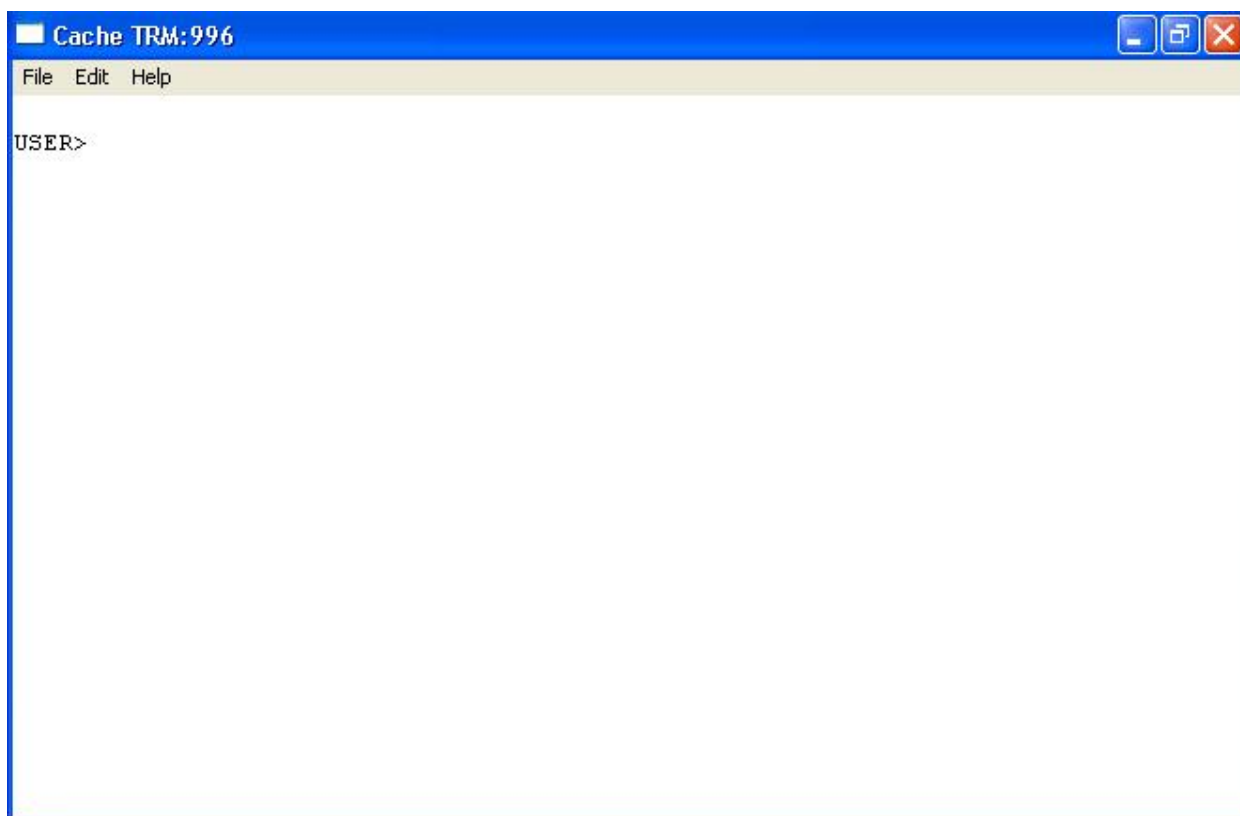
1) , 2 3  
PDF ( Cache.pdf).

2) Cache 212  
Cache , .

– Student1

Student1, . . ,

1.



1 –

«

».

3) , ,  
Cache.

• **Write** ,

.

USER>Write

• **x y** :

USER>Set a=125.1, b="

•

**Write:**

USER>Write a

125.1

USER>Write b

•

USER>Write

a=125.1

b="

•

**a b:**

USER>Set c=a, a=b, b=c

•

USER>Write a

USER>Write b

124.1

•

« »,

USER>Kill c

USER>Write

a="

b=124.1

•

USER>Write !, "

"!,"

"!,"

"!,"

"

• ,

USER>Write #, " : "!, " "!, " "!, " "

• :

USER>Write #, " "!,?10, " "!,?10, " "

• **Read:**

USER>Read " :", c

USER>Write c :

• . . c ,

• **10** .

USER>Read " :",\* :10

• : a=5, b=7, =10

• :

5 -

.

	Cache	
$a + b$	?	?
$a \cdot b - c$	?	?
$c / a$	?	?
$(2 + a) \cdot b$	?	?
$2 + a \cdot b$	?	?
3700 3600	?	?
c a	?	?
9,121 1	?	?
3700 3600	?	?
$2^5$	?	?
$9^{0,5}$	?	?
$16^{0,25}$	?	?
$4^{-2}$	?	?

•

.

-

,

,

.

USER&gt;s x="

"

USER&gt;w x

:

COS,

•

«^».

USER>s ^User.x=" "

•

•

**Cache.**            **\$Length()** –

USER>w \$L(^User.x)

14

•

**\$Extract()** –

USER>w \$E(^User.x,7,14)

•

**\$Find** –

USER>w \$F(^User.x," ")

15

•

**\$Justify** –

USER>w \$J("125",1,3)

125.000

•

(            ).            : «\_».

USER>s a=" "

USER>s b=" "

USER>w a\_b

USER>s a(1)=" "

USER>w a(1)

USER>s b(23,"")="."

USER>w b(23,"")

1) - , 6 ( , ,  
 , , , ), - 3 ( ,  
 , ), - 3 ( , ,  
 ).  
 - ( )  
 ).

^User.Medicine.

2) ( 10.pdf)

^Kod.

32.0; L57.8; Z94.3; 10.3; 23.0; G12.8; F30.2; M02.9; T53.1

3) - :

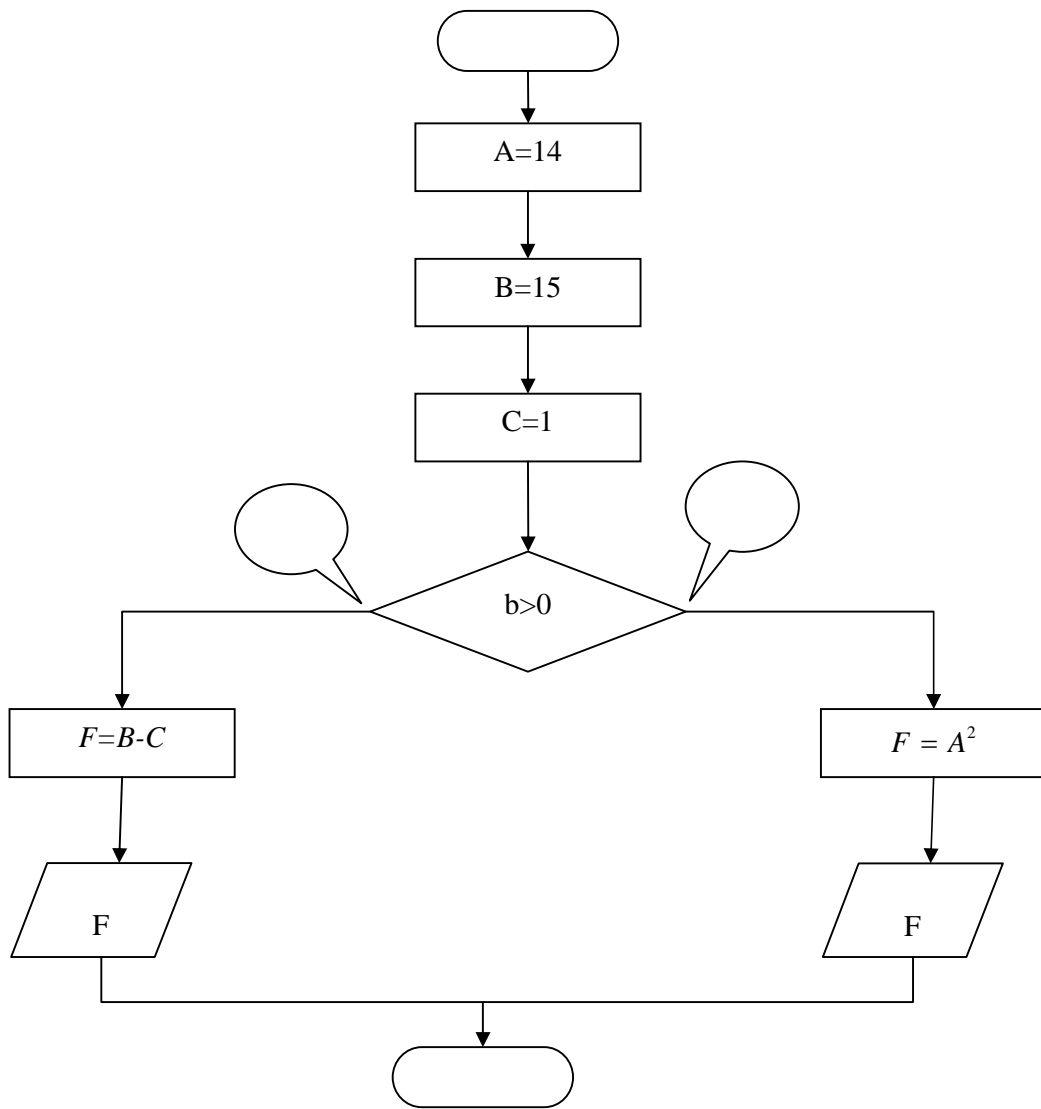
$Diagnoz = \begin{cases} " & ", \quad ^{User.Kod} = A05.1 \\ " & ", \quad ^{User.Kod} = S00.3 \\ " & ", \quad ^{User.Kod} = G50.5 \\ " & ", \end{cases}$

4)

kill.

**a=14, b=15, =1:**

$$F = \begin{cases} b - c, & b > 0 \\ a^2, & \end{cases}$$



:


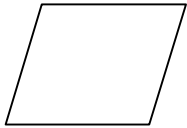

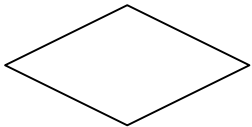
USER>Set a=14, b=15, c=1

USER>If b>0 {Set f=b-c} Else {Set f=a\*\*2} Write f

14

## Cache Object Script

- :

	<b>Cache Object Script</b>	-
/	«Terminal»	
/	Write/Read	
	Set	
	If        {} ElseIf {} Else {}	

1. , Cache, :  
C:\InterSystems\Cache\Docs\Main.html
2. Cache. - .  
. . . : , 2001 .- 415 .
3. Cache. . . . - .: - , 2006  
- 480 .
4. <http://www.intersystems.ru>
5. <http://www.sql.ru/forum/actualthread.aspx>

- 1) , ?
- 2) Cache Object Script.
- 3) Terminal?
- 4) Cache- ? ?
- 5) ?
- 6) ? ?
- 7) .
- 8) .
- 9) ?
- 10) Cache.